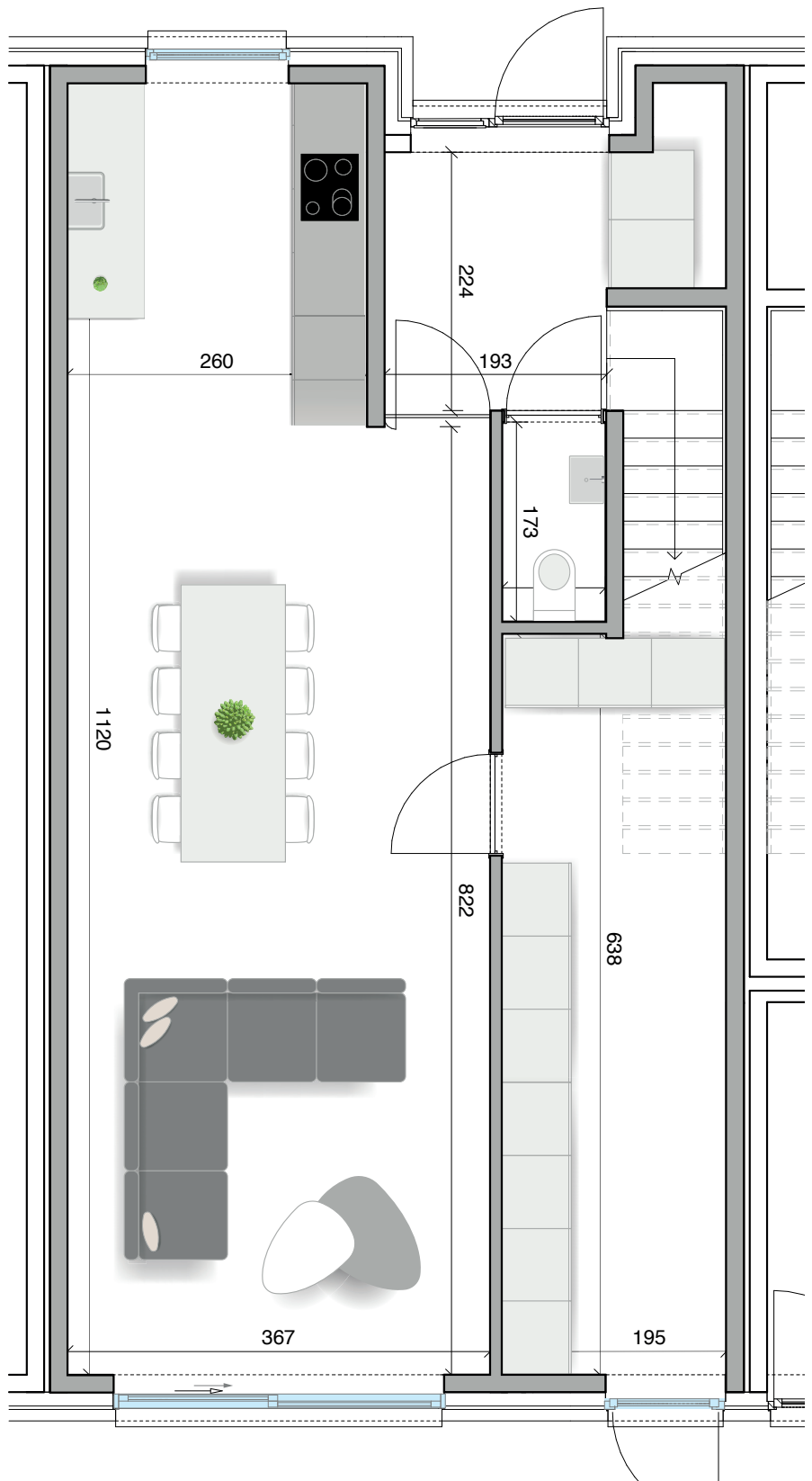
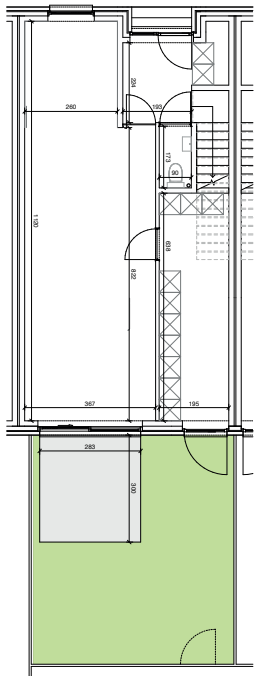
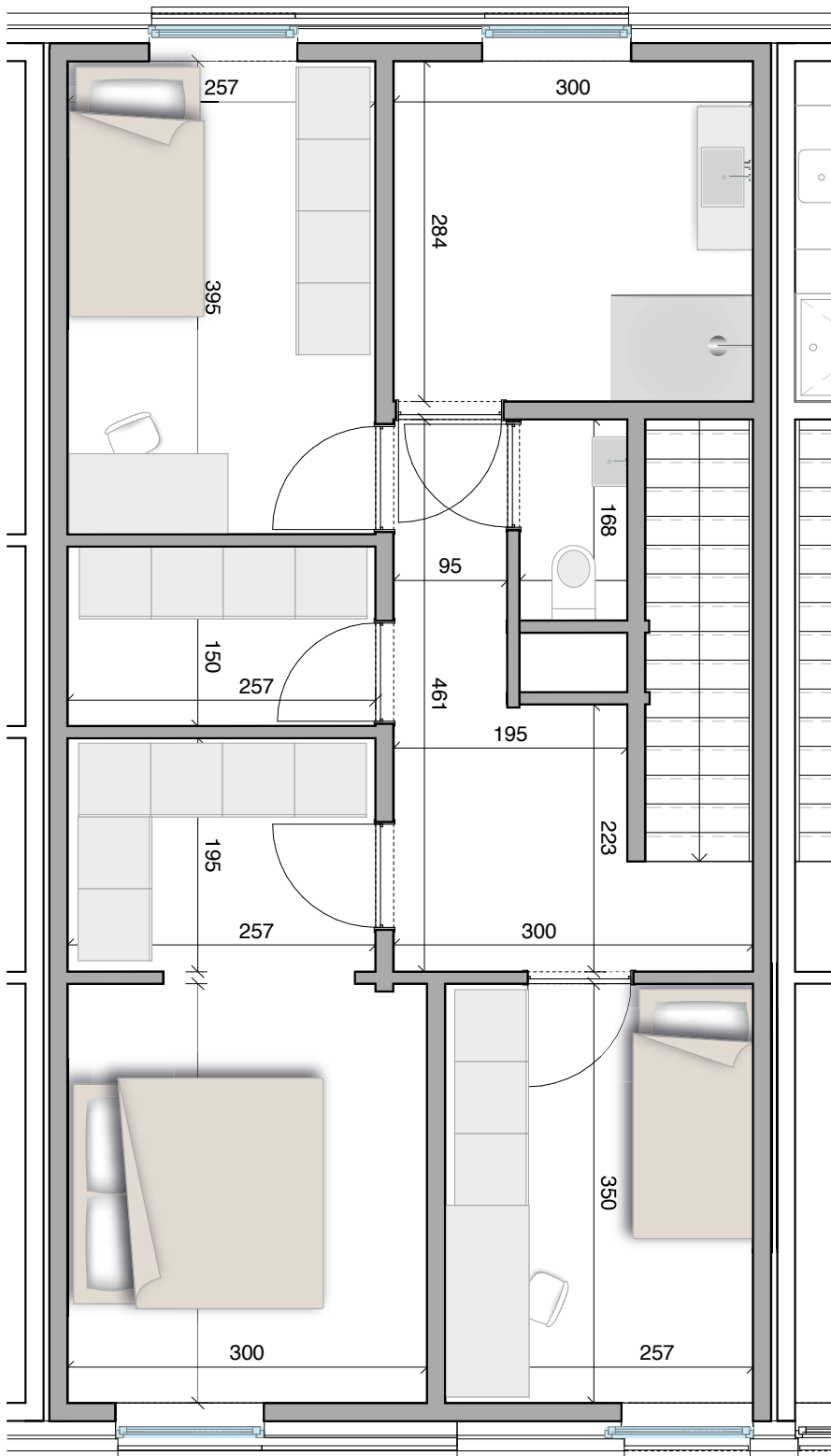


het hof
WO.02



gelijkvloers





perceel: **123,90m²**

verkoopsopp.*: **144,60m²**

tuin + terras: **52,10m²**

badkamer: **1**

slaapkamers: **3**

toilet: **2**

parking: **2 x 12,5m²**

- verkoopsopp.: buitenkant buitenmuur,
helft gemeenschappelijke muren, excl. terras

verdieping

